

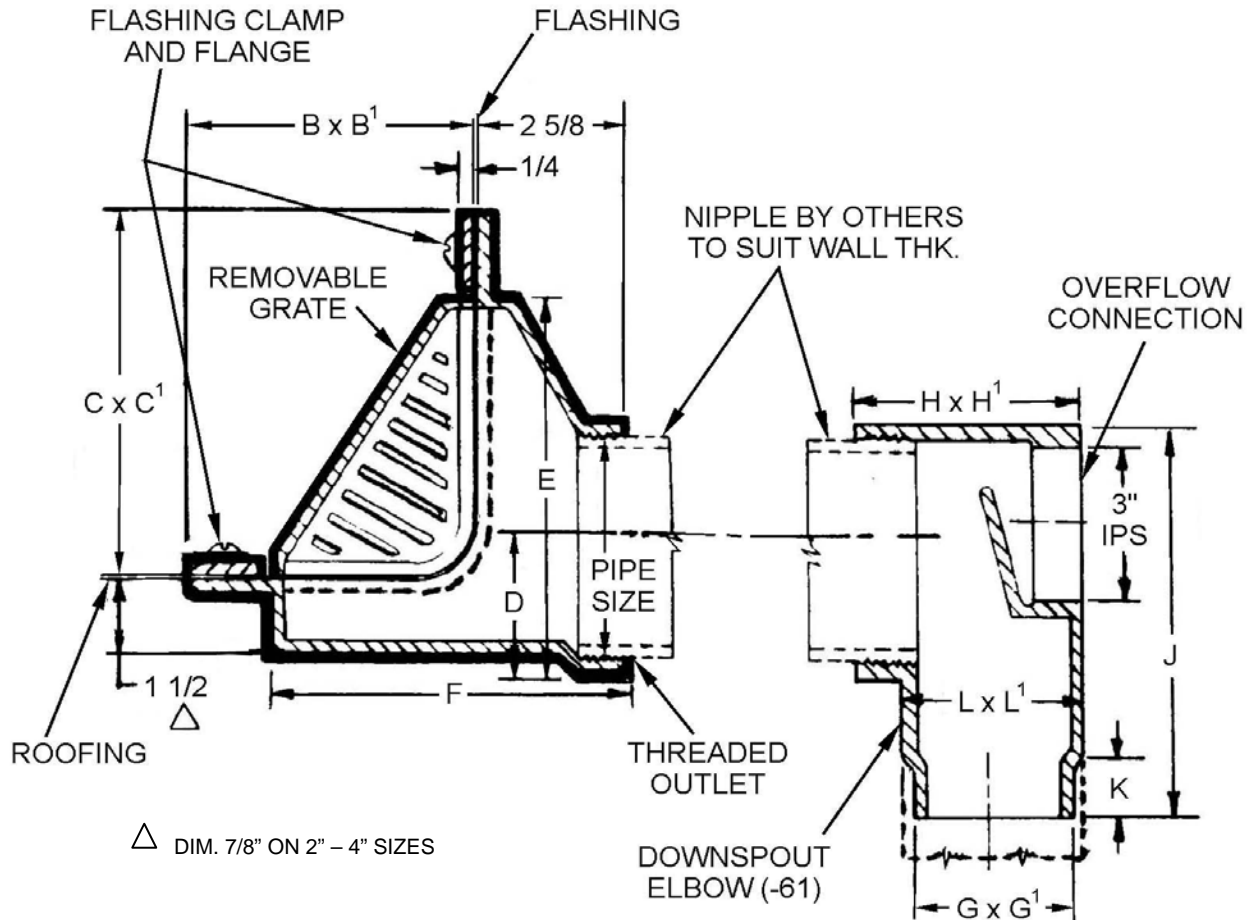
**SPECIFICATION:**

JOSAM 24700 SERIES COATED CAST IRON PARAPET TYPE ROOF DRAIN, REMOVABLE SLOPING BRONZE GRATE, FLASHING CLAMP, SHALLOW SUMP WITH FLASHING FLANGE AND SIDE OUTLET THREADED CONNECTION.

**ROOF DRAIN  
PARAPET TYPE, SLOPING GRATE**

**SERIES**

**24700**



△ DIM. 7/8" ON 2" - 4" SIZES

PIPE SIZE	B x B <sup>1</sup>	C x C <sup>1</sup>	D	E	F	G x G <sup>1</sup>	H x H <sup>1</sup>	J	K	L x L <sup>1</sup>	GRATE FREE AREA
2"	4-1/2 x 11	6-1/2 x 11	1-1/2	6-3/8	5-5/8	3 x 5-1/8	4-1/8 x 5-1/4	7-3/8	1-1/4	3-1/4 x 5-1/4	19.5
3"	4-1/2 x 11	6-1/2 x 11	2-1/8	6-3/8	5-5/8	3 x 5-1/8	4-1/8 x 5-1/4	7-3/8	1-1/4	3-1/4 x 5-1/4	19.5
4"	4-1/2 x 11	6-1/2 x 11	2-5/8	6-3/8	5-5/8	3 x 5-1/8	4-1/8 x 5-1/4	7-3/8	1-1/4	3-1/4 x 5-1/4	19.5
5"	5-1/2 x 13	7-1/2 x 13	3-1/2	8-1/8	6-5/8	4 x 6-1/8	5 x 7-1/2	10-3/4	1-3/4	4-1/4 x 7-1/2	34.3
6"	5-1/2 x 13	7-1/2 x 13	3-1/2	8-1/8	6-5/8	4 x 6-1/8	5 x 7-1/2	10-3/4	1-3/4	4-1/4 x 7-1/2	34.3

- ▼  -45 BODY WITH 45° THREADED OUTLET
- 20 GALVANIZED CAST IRON PARTS
- 22 CAST IRON GRATE
- 24 ROUGH NIKALOY GRATE

- 50 SATIN FINISH NIKALOY GRATE
- 51 SATIN FINISH BRONZE GRATE
- 61 DOWNSPOUT ELBOW (CAST IRON)
- 61-20 DOWNSPOUT ELBOW (GALVANIZED)

▼ SEPARATE SUBMITTAL FOR THIS OPTION AVAILABLE

DRAWING No. 06/23/08

**A-03329-K**

**JOSAM COMPANY**  
MICHIGAN CITY, INDIANA

NOTES: