

RAC Deluxe RetroDrain

PRODUCT DATA SPECIFICATIONS

PRODUCT DESCRIPTION

The RAC Deluxe RetroDrain is constructed of aluminum and stainless steel for durability and designed for use with single ply, BUR and modified bitumen roofing systems. The drain features an extra large flange for positive attachment of the roof flashing membrane, a recessed metal clamping ring for roof termination and proper drainage, along with an oversized drain strainer to minimize damming. The patented RAC Backflow Compression Seal is compatible with PVC or cast iron leader pipes and is available in 3-in., 4-in., 5-in. and 6-in. sizes.

FEATURES & BENEFITS

- Drain flange insures consistent, stable attachment to the substrate outside of the existing drain bowl and positive attachment of flashing membrane.
- Strainer dome features a low profile base to promote drainage and the large diameter provides added flow capacity and minimizes damming.
- 9-in. long drain stem accommodates most existing field conditions with custom drain pipe lengths available for quick turn elbows or deep existing drain bowls.
- The aluminum clamping ring is recessed into the drain flange to maximize drainage and is secured to stainless steel studs.

- The RAC Backflow Compression Seal is quickly activated at drain flange level and protects the roofing system and building contents from water backup damage.
- Saves time and money by allowing easy installation from the rooftop without disturbing occupants.

APPROVALS & STANDARDS



ANSI/SPRI RD-1 – developed by SPRI (Sheet membrane and component suppliers to the commercial roofing industry) a certified canvasser of ANSI (American National Standards Institute), and features a test protocol designed to assure a leak-free connection to existing plumbing.



IAPMO PS 97-96 – a standard plumbing industry test designed to check for leakage at connections under a 10 foot head of water for a 24 hour period. This test was performed by the Smith-Emery Company, a nationally recognized independent test laboratory providing physical testing of construction related materials. The RAC Deluxe RetroDrain produced no leakage.



PHYSICAL DATA

The data below is constant for all OMG RAC Deluxe RetroDrains.

DRAIN BODY		SEAL	
.080" thick aluminum		Watertight RAC Backflow Compression Seal requires 7/16" wrench	
FLANGE		STRAINER DOME	
18" x 18" width with sump area		14" width, 4" high, made of .080" thick aluminum; vandal-resistant model available	
STEM		CLAMP RING	
9" length		.125" thick aluminum recessed	

ORDERING INFORMATION

CAT. NO.	SIZE	DOMES TYPE	PKG	WEIGHT
RACDX3	3"	Aluminum	Each	27 lbs.
RACDX4	4"	Aluminum	Each	27 lbs.
RACDX5	5"	Aluminum	Each	27 lbs.
RACDX6	6"	Aluminum	Each	27 lbs.

RP10130B



ROOFING PRODUCTS

153 BOWLES ROAD, AGAWAM, MA 01001
800-633-3800 WWW.OLYFAST.COM INFO@OLYFAST.COM

RetroDrain® and OlyFlow® are trademarks of OMG, Inc. Copyright © 2010 OMG, Inc. All rights reserved.



RAC Deluxe RetroDrain

INSTALLATION PROCEDURE

FOR USE WITH

All types of roof covers.

JOB PREPARATION

The existing leader pipe shall be cleaned of excess bitumen build-up, dirt and debris. Remove the clamping ring assembly and bolts from the existing drain and discard. If required, comply with roof manufacturer's directions for additional cleaning or detailing.

STEP 1

Important – The aluminum activation cone may have settled into the backflow seal during shipping which may partially activate the seal. To deactivate the seal, simply push down on the top of the two backflow bolts. **Note:** The top of the tapered metal cone should remain inside the bottom of the urethane seal. Do not fully disengage the cone from the urethane seal.

STEP 2

Lower the Retrofit Drain Assembly into the existing drain leader pipe until the underside of the drain flange sits flat on the substrate.

STEP 3

Using the pre-punched holes in the perimeter of the flange, secure the drain flange to the substrate with appropriate fasteners.

STEP 4

Hand tighten the $\frac{7}{16}$ -in. bolts on the backflow rods to activate the seal. **Alternate tightening** between the bolts for an even seal expansion. Rods should be snug when fully activated. Do not overtighten.

STEP 5

Install roofing material per roofing manufacturer's drain flashing details.

STEP 6

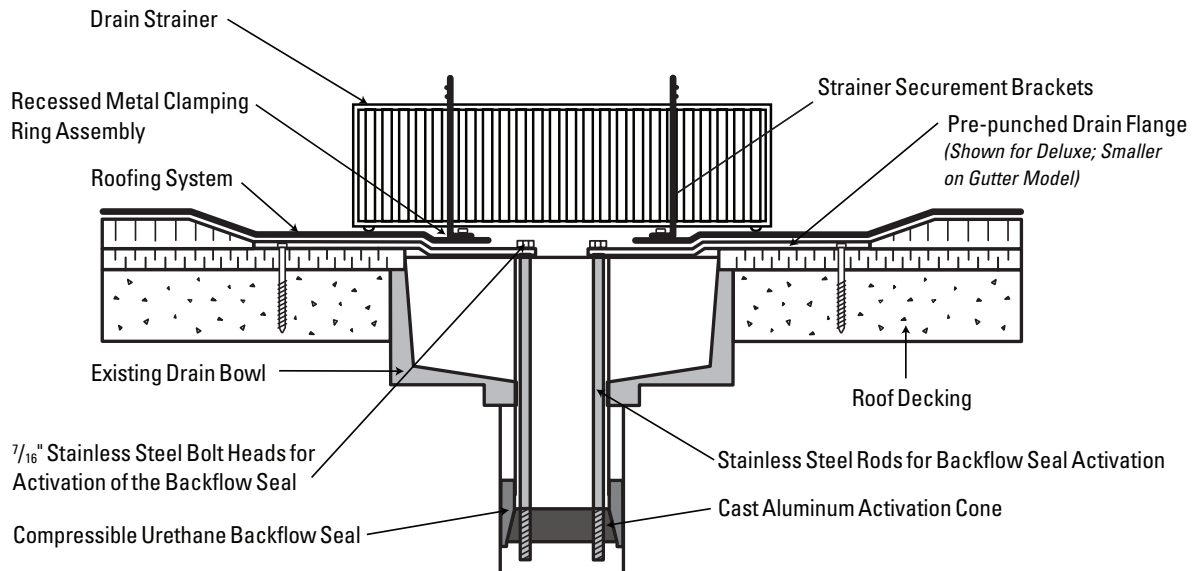
Install the metal clamping ring over the flashing materials and secure in place by hand-tightening the lock nuts provided. Do not overtighten.

STEP 7

Place the 1-in. long slots in the top of the strainer directly over the two strainer securement brackets by pressing the two brackets inward. Push down until strainer is at roof level.

Vandal Resistant Models have slightly different instructions which are included with the product.

**For technical assistance contact
OMG at 800-633-3800.**



ROOFING PRODUCTS

153 BOWLES ROAD, AGAWAM, MA 01001
800-633-3800 WWW.OLYFAST.COM INFO@OLYFAST.COM

OlyFlow® is a trademark of OMG, Inc. Copyright © 2010 OMG, Inc. All rights reserved.