

NewCon New Connection Drain

PRODUCT DATA SPECIFICATIONS

PRODUCT DESCRIPTION

Designed for installation in roof areas that pond water or new roof construction. Constructed of aluminum and stainless steel components for durability and designed for use with single ply, BUR and modified bitumen roofing systems, NewCon drains feature an extra large flange for positive attachment of the roof flashing membrane, a recessed metal clamping ring for roof termination. In addition, they feature an oversized strainer dome to minimize damming, and a no-hub banded coupler for connecting to PVC or Cast Iron plumbing below deck. Available in 3-in., 4-in. and 5-in. sizes with the RAC low profile strainer dome or the Vandal Resistant low profile strainer dome.

FEATURES & BENEFITS

- Pre-punched, .080-in. thick, extra large 18-in. x 18-in. aluminum drain flange insures consistent, stable attachment to the roofing substrate and provides a clean surface for adhesion of drain flashing materials.
- Strainer dome features a low profile base to promote drainage and the large diameter provides added flow capacity and minimizes damming.
- 8-in. drain stem accommodates most existing field conditions with longer drain pipe lengths available.
- Clamping ring assembly is recessed into the drain flange to maximize drainage and is secured to stainless steel studs.
- Complete with a no-hub coupler that connects with PVC or cast iron plumbing below deck.



PHYSICAL DATA

The data below is constant for all OMG NewCon New Connection Drains.

DRAIN BODY	COUPLER
.080" thick aluminum	No-hub coupler with stainless steel bands
FLANGE	STRAINER DOME
18" x 18" with sump area	14" width, 4" high, made of .080" thick aluminum; vandal-resistant model available
STEM	CLAMP RING
8" length	.125" thick aluminum recessed

ORDERING INFORMATION

CAT. NO.	SIZE	PKG	WEIGHT
NCON3R	3"	Each	27 lbs.
NCON4R	4"	Each	27 lbs.
NCON5R	5"	Each	27 lbs.

RP 10139E



ROOFING PRODUCTS

153 BOWLES ROAD, AGAWAM, MA 01001
800-633-3800 WWW.OLYFAST.COM INFO@OLYFAST.COM

OlyFlow® is a registered trademark of OMG, Inc. Copyright © 2010 OMG, Inc. All rights reserved.



NewCon New Connection Drain

INSTALLATION PROCEDURE

FOR USE WITH

All types of roof covers.

INSPECTION

Contractor is responsible for proper installation and placement of the NewCon Drain to be installed. Accessibility for below deck plumbing work should be confirmed prior to drain installation.

JOB PREPARATION

All roof surfaces should be swept clean of all loose dirt, dust and debris. If required, comply with roof manufacturer's directions for additional cleaning or detailing.

STEP 1

Determine NewCon Drain location(s).

STEP 2

If drain is to be sumped for drainage, remove the existing roofing and insulation to create the desired size and depth of sump.

STEP 3

Install wood nailers (optional) in 18-in. x 18-in. configuration if required by roof system manufacturer.

STEP 4

Cut a hole through the roofing and decking in center of sump area to accommodate the O.D. of the NewCon drainage pipe.

STEP 5

Install the NewCon Drain pipe through the prepared hole in the decking and secure the drain to the substrate by fastening through the pre-punched holes in the perimeter of the drain flange.

STEP 6

Below the roof deck, install the NO HUB banded coupler provided to connect the NewCon Drain pipe and the PVC or cast iron pipe provided by others.

STEP 7

Install the drain flashing material in place per roof manufacturer's details.

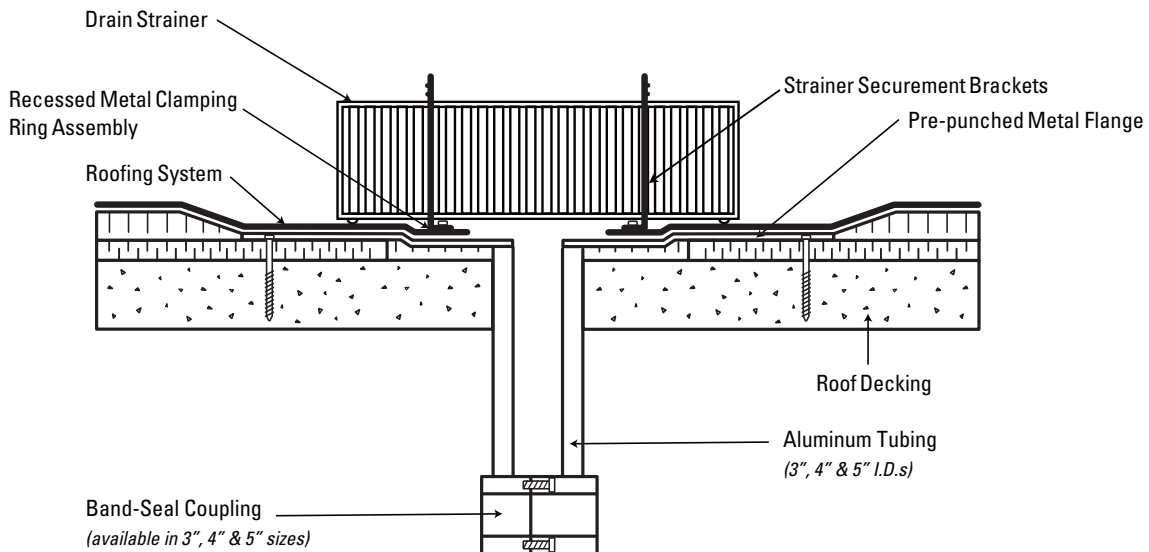
STEP 8

Place the metal clamping ring over the flashing material and secure in place by **hand tightening** the lock nuts provided. Do not overtighten.

STEP 9

Place the 1-in. long slots in the top of the strainer directly over the strainer securement brackets (press the two brackets inward) and push down until the strainer is at roof level.

**For technical assistance contact
OMG at 800-633-3800.**



ROOFING PRODUCTS

153 BOWLES ROAD, AGAWAM, MA 01001
800-633-3800 WWW.OLYFAST.COM INFO@OLYFAST.COM

OlyFlow® is a trademark of OMG, Inc. Copyright © 2010 OMG, Inc. All rights reserved.