

Gutter RetroDrain

PRODUCT DATA SPECIFICATIONS

PRODUCT DESCRIPTION

Its unique dimensions allow the Gutter RetroDrain to be installed within 9-in. wide box type gutters, near parapet walls or other tight areas. The patented RAC Backflow Compression Seal provides a proven plumbing connection with the existing leader pipe. Available in 3-in. and 4-in. sizes.

FEATURES & BENEFITS

- Pre-punched, .080-in. thick 8-in. x 8-in. aluminum drain flange.
- Strainer dome constructed of .065-in. thick aluminum and is 8-in. in diameter.
- Includes a 6-in. diameter, .125-in. thick, low profile, aluminum clamping ring that provides a tight compression for terminating for the roof system. The clamping ring is secured to the drain body with stainless steel studs.
- Patented RAC Backflow Compression Seal is quickly activated at drain flange level with a $\frac{7}{16}$ -in. wrench and protects the roof and building from water damage.
- Designed to accommodate tight field conditions.
- Saves time and money by allowing easy installation from the rooftop without disturbing occupants.

APPROVALS & STANDARDS



ANSI/SPRI RD-1 – developed by SPRI (Sheet membrane and component suppliers to the commercial roofing industry) a certified canvasser of ANSI (American National Standards Institute), and features a test protocol designed to assure a leak-free connection to existing plumbing.



IAPMO PS 97-96 – a standard plumbing industry test designed to check for leakage at connections under a 10 foot head of water for a 24 hour period. This test was performed by the Smith-Emery Company, a nationally recognized independent test laboratory providing physical testing of construction related materials. The RAC Deluxe RetroDrain produced no leakage.



PHYSICAL DATA

The data below is constant for all OMG Gutter RetroDrains.

DRAIN BODY	SEAL
.080" thick aluminum	Watertight RAC Backflow Compression Seal requires $\frac{7}{16}$ " wrench
FLANGE	STRAINER DOME
8" x 8" width	8" diameter, made of .065" thick aluminum
STEM	CLAMP RING
9" length	.125" thick low profile aluminum

ORDERING INFORMATION

CAT. NO.	SIZE	PKG	WEIGHT
GM3	3"	Each	20 lbs.
GM4	4"	Each	20 lbs.

RP10130G



ROOFING PRODUCTS

153 BOWLES ROAD, AGAWAM, MA 01001
800-633-3800 WWW.OLYFAST.COM INFO@OLYFAST.COM

RetroDrain® and OlyFlow® are trademarks of OMG, Inc. Copyright © 2010 OMG, Inc. All rights reserved.



Gutter RetroDrain

INSTALLATION PROCEDURE

FOR USE WITH

All types of roof covers.

JOB PREPARATION

The existing leader pipe shall be cleaned of excess bitumen build-up, dirt and debris. Remove the clamping ring assembly and bolts from the existing drain and discard. If required, comply with roof manufacturer's directions for additional cleaning or detailing.

STEP 1

Important – The aluminum activation cone may have settled into the backflow seal during shipping which may partially activate the seal. To deactivate the seal, simply push down on the top of the two backflow bolts. **Note:** The top of the tapered metal cone should remain inside the bottom of the urethane seal. Do not fully disengage the cone from the urethane seal.

STEP 2

Lower the Retrofit Drain Assembly into the existing drain leader pipe until the underside of the drain flange sits flat on the substrate.

STEP 3

Using the pre-punched holes in the perimeter of the flange, secure the drain flange to the substrate with appropriate fasteners.

STEP 4

Hand tighten the $\frac{7}{16}$ -in. bolts on the backflow rods to activate the seal. **Alternate tightening** between the bolts for an even seal expansion. Rods should be snug when fully activated. Do not overtighten.

STEP 5

Install roofing material per roofing manufacturer's drain flashing details.

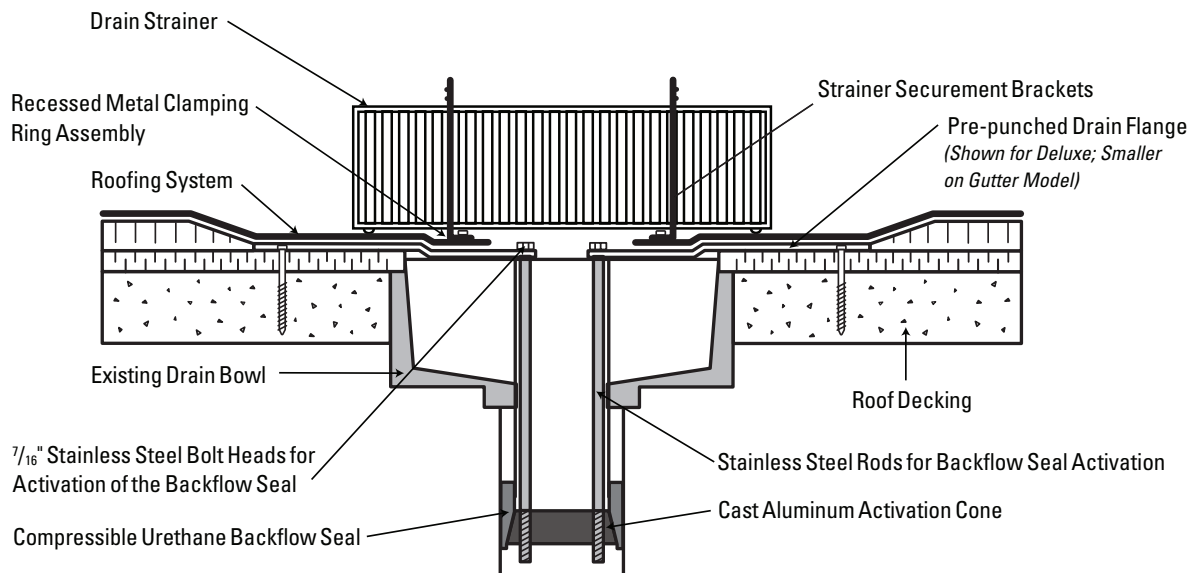
STEP 6

Install the metal clamping ring over the flashing materials and secure in place by **hand-tightening** the lock nuts provided. Do not overtighten.

STEP 7

Place the 1-in. long slots in the top of the strainer directly over the two strainer securement brackets by pressing the two brackets inward. Push down until strainer is at roof level.

**For technical assistance contact
OMG at 800-633-3800.**



ROOFING PRODUCTS

153 BOWLES ROAD, AGAWAM, MA 01001

800-633-3800 WWW.OLYFAST.COM INFO@OLYFAST.COM

SuperDome® and OlyFlow® are trademarks of OMG, Inc. Copyright © 2010 OMG, Inc. All rights reserved.